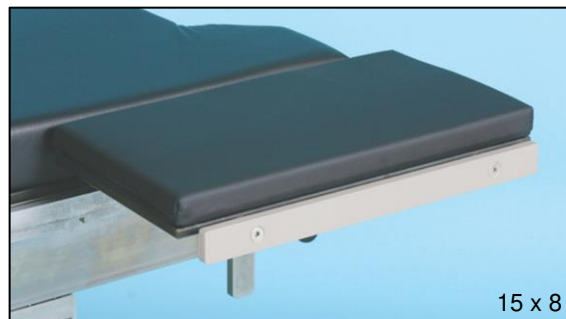
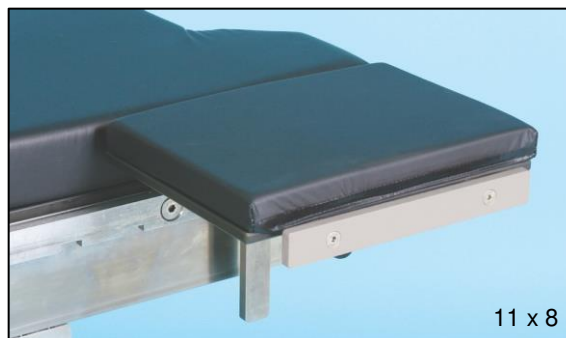




## Instructions for Use

- REF** **Table Width Extension, 11 x 8**  
**800-0081** 11"L x 8"W (28 cm x 20 cm)
- REF** **Table Width Extension, 11 x 8 (EU)**  
**800-0081-EU** 11"L x 8"W (28 cm x 20 cm)  
*Table Width Extension Pad, 11 x 8*  
**508-0132** 11"L x 8"W (28 cm x 20 cm)
- REF** **Table Width Extension, 15 x 8**  
**800-0079** 15"L x 8"W (38 cm x 20 cm)
- REF** **Table Width Extension, 15 x 8 (EU)**  
**800-0079-EU** 15"L x 8"W (38 cm x 20 cm)  
*Table Width Extension Pad, 15 x 8*  
**508-0114** 15"L x 8"W (38 cm x 20 cm)
- REF** **Table Width Extension, 20 x 4**  
**800-0077** 20"L x 4"W (51 cm x 10 cm)
- REF** **Table Width Extension, 20 x 4 (EU)**  
**800-0077-EU** 20"L x 4"W (51 cm x 10 cm)  
*Table Width Extension Pad, 20 x 4*  
**508-0075** 20"L x 4"W (51 cm x 10 cm)



### INTENDED USE

Intended use is to extend width of surgical table. The intended users of this device are medical professionals within hospitals and surgery centers.

### INSTRUCTIONS

Become familiar with features of patient positioning device before use with patient. Always practice use on a nurse, physician or appropriate volunteer prior to using clinically.

#### Attaching to Surgical Table

1. Attach Simple Clamp P/N 800-0228 (sold separately) onto side rail
2. Insert mounting post into clamp
3. Turn handle clockwise to tighten clamp

#### Detaching from Surgical Table

1. Turn clamp handle counterclockwise to loosen
2. Remove from clamp

## GENERAL SPECIFICATIONS

*Device Dimensions (maximum)*

<b>11 x 8</b> <b>800-0081 &amp; 800-0081-EU</b> <ul style="list-style-type: none"> <li>• Length: 11" +/- 0.5" (28 cm +/- 1 cm)</li> <li>• Width: 8" +/- 0.5" (20 cm +/- 1 cm)</li> <li>• Depth: 8" +/- 0.5" (with pad) (20 cm +/- 1 cm)</li> <li>• Device Weight: 4 lbs. +/- 0.5 lbs. (1.8 kg +/- .22 kg)</li> <li>• Single-person installation</li> </ul>	<b>15 x 8</b> <b>800-0079 &amp; 800-0079-EU</b> <ul style="list-style-type: none"> <li>• Length: 15" +/- 0.5" (38 cm +/- 1 cm)</li> <li>• Width: 8" +/- 0.5" (20 cm +/- 1 cm)</li> <li>• Depth: 8" +/- 0.5" (with pad) (20 cm +/- 1 cm)</li> <li>• Device Weight: 4 lbs. +/- 0.5 lbs. (1.8 kg +/- .22 kg)</li> <li>• Single-person installation</li> </ul>	<b>20 x 4</b> <b>800-0077 &amp; 800-0077-EU</b> <ul style="list-style-type: none"> <li>• Length: 20" +/- 0.5" (51 cm +/- 1 cm)</li> <li>• Width: 4" +/- 0.5" (10 cm +/- 1 cm)</li> <li>• Depth: 8" +/- 0.5" (with pad) (20 cm +/- 1 cm)</li> <li>• Device Weight: 4.5 lbs. +/- 0.5 lbs. (2 kg +/- .22 kg)</li> <li>• Single-person installation</li> </ul>
---	---	---

## COMPONENT OVERVIEW

Table Width Extensions are surgical table extensions that attach to surgical table side rails.

### **Replacement Pads**

508-0132 Table Width Extension Pad, 11 x 8 11"L x 8"W (28 cm x 20 cm)  
 508-0114 Table Width Extension Pad, 15 x 8 15"L x 8"W (38 cm x 20 cm)  
 508-0075 Table Width Extension Pad, 20 x 4 20"L x 4"W (51 cm x 10 cm)

### **Other required product for use:**

**800-0228 Simple Clamp** (sold separately)

**US:** 0.374" x 1.122" (9.5 mm x 28.5 mm) PN# 800-0228

**Denyer:** 0.236" x 1.496" (6 mm x 38 mm) PN# 800-0228-DEN

**Europe:** 0.394" x 0.984" (10 mm x 25 mm) PN# 800-0228-EU

**Eschmann (UK):** 0.236" x 1.260" (6 mm x 32 mm) PN# 800-0228-UK

**Japan:** 0.354" x 1.260" (9 mm x 32 mm) PN# 800-0228-JPN

**Swiss:** 0.394" x 1.181" (10 mm x 30 mm) PN# 800-0228-SWISS

## GENERAL INFORMATION

- Product not made with Natural Rubber Latex
- Device supports 500 lb. (227 kg) proportional patient load (6'4" (193 cm) tall patient per 99% human body model)
- Product warranty covers product from manufacturing defects for period of 2 years
- If damaged in shipping, call Customer Service at (888) 724-8763 or (781) 982-7000 to obtain Return Material Authorization number. For product warranty issues, contact Customer Service.
- CE marked medical device according to MDR (EU) 2017/745
- Product is maintenance-free, check product condition before next use
- Life of device is 5 years under normal use
- Store device between -4°F to +86°F (-20°C to 30°C)

## DISPOSAL

- **General** - Prevent infection by cleaning and disinfecting product before disposal
- **Packaging** - Dispose packaging material via household waste according to national requirements
- SchureMed accepts back used or retired products - or dispose of product in accordance with national requirements



## PRODUCT USE WARNINGS

**WARNING!** Maximum load should not exceed appropriate proportion of a patient weighing 500 lbs. (227 kg). Use care with low-maximum load capacity surgical tables that accessory rails are not overloaded.



### WARNING!

Hazard resulting from incorrect use. Strictly follow Instructions for Use with your surgical table system.



**WARNING!** Do not reuse device if there are obvious signs of damage or functional issues. Consult manufacturer before reusing.

## CLEANING RECOMMENDATION

Follow current Association of periOperative Registered Nurses Journal Guidelines for proper cleaning and disinfection procedures.



### WARNING!

Adhere to standards for blood-borne pathogens from the Occupational Safety and Health Administration. Use recommended protective clothing, gloves, masks and eye protection to clean accessory.

## CAUTION

Strictly read/follow manufacturer's directions for cleaning fluids. **DO NOT** use cleaners containing phenolics.

1. Remove major contaminants from accessory with disposable materials. Follow appropriate bio-hazard waste disposal procedures.
2. Apply cleaning fluid liberally to entire accessory and wipe with clean, lint-free cloth until all moisture and cleaning fluid is removed from accessory
3. Let accessory dry

## USER NOTICE

Any serious incident that has occurred in relation to the device should be reported to the manufacturer and the competent authority of the Member State in which the user and/or patient is established.

## eIFU Language Versions

To download and print the Instructions for Use, please go to [www.schuremed.com](http://www.schuremed.com)

## Symbol Glossary

Symbol	Title
	Manufacturer
	Date of manufacture
	Authorized Representative in the European Community
	Authorized Representative in the Swiss
	Importer
	Serial Number
	Warning
	Medical Device
	Unique Device Identifier
	CE Marking



**SchureMed** (081001460)

452 Randolph Street, Abington, MA 02351 USA

**Toll Free** (888) 724-8763 | **Ph** (781) 982-7000 | **Fax** (781) 982-7001 | **orders@schuremed.com**

