

Schure Loc™ XPS Accessories

Schure Loc™ XPS Adapter

- To be used with #800-0280 Schure Loc XPS
- Sold individually

#790-0039 Schure Loc™ XPS Adapter



Schure Loc™ XPS Forearm Attachment

- The Schure Loc™ Forearm Attachment is used to wrap the patient forearm to the Schure Loc™ XPS for shoulder surgery

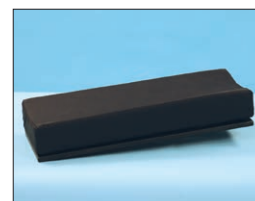
#790-0040 Schure Loc™ XPS Forearm



Schure Loc™ XPS Armboard

- Arm platform measures 6"W x 16"L
- 2" Deluxe Concave Foam Pad included

#790-0056 Schure Loc™ XPS Armboard



Schure Loc™ XPS Counter Traction Post

- Optional accessory includes Lexan Post, sold individually

#790-0057 Schure Loc™ XPS Counter Traction Post



Schure Loc™ XPS TKR Positioner

- Designed accessory for total knee replacements. Easy-to-use & completely rigid once locked

#790-0077 Schure Loc™ XPS TKR Positioner



Schure Loc™ XPS Elbow/Ankle Positioner

- Designed to safely and effectively hold upper and lower extremities. Comes complete with 2" thick deluxe pad.

#790-0075 Schure Loc™ XPS Elbow/Ankle Positioner



Disposable Schure Loc™ XPS Sterile Kit, 10/cs*

- Includes Sterile Forearm Wrap, Sterile Self-Adherant Coban™ and Sterile Drape (fits whole arm)

#800-0281 Disp. Schure Loc™ XPS Sterile Kit, 10/cs*

*Sterile products are non-returnable.

