



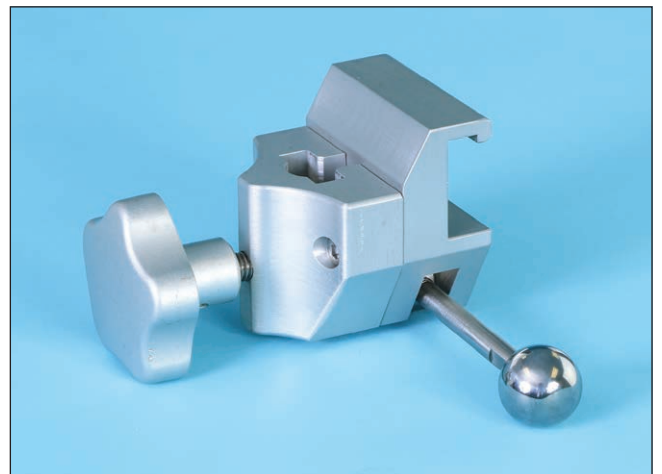
## CamLoc Rail Clamp

*Attaches to the rail at any location over 1-2 drapes*

The CamLoc Rail Clamp is designed for use in the sterile field and fully autoclavable.

### **Features**

- Accepts accessories with round posts up to  $\frac{5}{8}$ "D (1.6cm) and flat posts 1" x  $\frac{3}{8}$ " (2.5cm x .95cm)
- Attaches along the side rail, without the need of notches
- 500 lb (227 kg) patient weight capacity
- Choose Standard Clamp to use with 1-2 drapes or Large Clamp for 3-5 drapes



### **CamLoc Rail Clamp**

**#800-0271**

**#800-0271-L**

**#800-0271-UK**

**#800-0271-DEN**

**#800-0271-EU**

**#800-0271-SWISS**

**#800-0271-JPN**

*Each clamp sold separately.*

**Phone** 888.724.8763 • 781.982.7000 | **Fax** 781.982.7001 | [www.schuremed.com](http://www.schuremed.com)

[orders@schuremed.com](mailto:orders@schuremed.com) | 452 Randolph Street, Abington, MA 02351